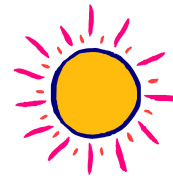


# Market Harborough Church of England Primary School



## Newsletter 27<sup>th</sup> May 2011

---

Dear Parents/Carers,

Here we are at the end of this half term – it's flown by! We have lots of things lined up for the last half of the summer term, but I'd like to start by thanking Miss Lee and the school choir for a super concert last Thursday – the children sang beautifully and the audience could hear every word. Thanks also to Mrs Rodi and the band for their sterling work!

The Foundation Stage team would also like to say a big thank you to the 'superdads' who threw themselves wholeheartedly into making all manner of superheroes with the children yesterday morning; if the glitter was anything to go by, it was a great success!

### June Dates

Monday 6 <sup>th</sup>	Y3 visit to New Walk Museum Green Team 3.30 – 4.30pm
Tuesday 7 <sup>th</sup>	Basketball finals – 3.30pm WPCC
Friday 10 <sup>th</sup>	Fairtrade Snack Bar (morning breaktime)
Saturday 11 <sup>th</sup>	Carnival time! Please come along and support us: Carnival Parade – School Float Football Tournament It's a Knockout!
Wednesday 15 <sup>th</sup>	French theatre company performance (pm) FS New Intake – Parents' evening 6.30pm
Thursday 16 <sup>th</sup>	FS New Intake – Informal tea party 3.45 – 5pm
Monday 20 <sup>th</sup>	Area Sports 4.30 – 7pm
Tuesday 21 <sup>st</sup>	FS New Intake – Induction (pm) FS/Y1 Transition – Parents' meeting 5.30 – 6.30pm
Thursday 23 <sup>rd</sup>	Y5 visit to Conkers Y2/Y3 Transition – Parents' meeting 5.30 – 6pm
Friday 24 <sup>th</sup>	Y5 D&T Day at WPCC
Saturday 25 <sup>th</sup>	PTA Summer Fete 1.30 – 4pm
Week beginning 27 <sup>th</sup>	National Sports Week
Tuesday 28 <sup>th</sup>	Y1/2 Multiskills session at Robert Smyth FS New Intake – Induction (pm)
Wednesday 29 <sup>th</sup>	Sports Day: KS1 am, KS2 pm (reserve date 6 <sup>th</sup> July)
Thursday 30 <sup>th</sup>	School Council visit to Animal Rescue Centre Annual Open Evening 6 – 7.30pm

### July Dates

Monday 4 <sup>th</sup>	Green Team 3.30 – 4.30pm
Tuesday 5 <sup>th</sup>	FS Celebration Assembly FS New Intake – Induction (pm) Y5/6 Production 2pm & 7pm
Wednesday 6 <sup>th</sup>	Reserve Sports Day (KS1 am, KS2 pm) Y5/6 Production 7pm
Thursday 7 <sup>th</sup>	Y3/4 Mini Olympics at Robert Smyth FS New Intake – School Lunch (children & parents)
Monday 11 <sup>th</sup>	Y6 to WPCC FS New Intake – Induction (am) Whole school changeover to new classes (am)
Tuesday 12 <sup>th</sup>	Y6 to WPCC
Friday 15 <sup>th</sup>	End of Term Leavers' Service, St Dionysius 9.30am

### **Information and Reminders ~**

The school will be taking part in National Sports Week from 27<sup>th</sup> June, and as well as the school Sports Day we hope to run lots of other activities. If any parent is willing to volunteer to run a sports activity of any kind, or knows of any individual or club who would be willing to provide a free session, please could they pass on their details to Miss Booth (Year 1) or Mr Flynn (Year 5) as soon as possible.

Just in case any parents were given advance notice of the Year 5/6 production dates, please note that the performances originally scheduled for Thursday have been moved to Tuesday of the same week to avoid a clash with a Leicester Arts event.

Please could I remind parents that dogs should not be brought on to the school premises nor left unattended near the school gates, particularly at the back gate to the school where the grounds on either side are private property.

We are reaching that time of year when parents are contacting the office for permission to take their children out of school for holidays. If you are planning to go on holiday before the end of the school term (or at the beginning of the next school year in September), please contact Mrs Clark who will supply you with a copy of the official holiday request form.

I know it can be easier for parents to pay all in one go for school dinners and other activities, particularly when you have more than one child at school, but please bear in mind that any monies for PTA events (eg Discos, DVD night etc) are passed directly to the PTA and are *not* processed by the school office. We'd be very grateful if you could therefore send in any PTA money in its own clearly labelled envelope – the PTA have confirmed that it's OK to send payments for siblings in one envelope.

Thank you to everyone who returned the Parent Questionnaire – a summary of the analysis is enclosed with this newsletter.

### **Successes, Achievements and just Plain Fun ~**

Revd Brand led a special assembly on Monday, when pupils from Kibworth Primary School came to hand over the 'Held Together' carving that is going on a 'pilgrimage' around Leicestershire church schools. The children then had a chance to look at and talk about the carving. Canon Mary Lawson (Director of the Leicester Diocesan Board of Education) came to school to collect the carving on Tuesday afternoon, and we are very much hoping to arrange for her to come back in the next half term to lead the school in a special extended assembly.

I'm delighted to announce that thanks to everyone's efforts in the SwiMarathon, the school as a whole, and Miss Stephens individually, have received awards from the Rotary Club! The awards will be presented at a special dinner immediately after we come back in June, so well done Miss Stephens, and a huge thank you to the teachers, parents and children who helped raise a fantastic £973.

Year 4 children had a great day out in Stratford last Friday, and our mini-Shakespeares have been fired up with enthusiasm for their futuristic script work – "To be or not to be, Doctor, that is the question...!!"

### **Have a peaceful and relaxing break – see you on 6<sup>th</sup> June**

<b>Attendance</b>	
Week beginning 9 <sup>th</sup> May 2011	Week beginning 16 <sup>th</sup> May 2011
Best class attendance ~ RLS 2HM 100%	Best class attendance ~ RLS 5MF 100%
Whole school attendance ~ 92.9%	Whole school attendance ~ 93.1%

**Sue Bovill**